

Arihant Group Presents

PJ Heritage

एक शाही अनुभव...



पधारो म्हाने देश....



After a busy day schedule, peace and privacy is what we most desire...

Welcome to P. J Heritage! Enter a delightful world where serenity and style greets you at the doorstep. Strategically located in central Falna, Planned with Precision premium property development Situated in peaceful neighbouring environment, P J HERITAGE will be symbol of your proud New home! In-depth planning with attention to detail Beautiful Facade is the solid establishment on which the project signifies! Every magnificent structure or a monument is not only admired for its grandness but is also acclaimed for the minute details that the creator ensured.

At PJ Heritage, every minuscule aspect has been inspected comprehensively so as to match your taste and style. Rest assured; your new home is going to be one of the finest masterpieces from the experienced creator Arihant Constructions.



About the Project

Proudly presenting P J HERITAGE, a well-planned residential project that is inspired by a happy family life.

Located on the College road, Falna brings the best combination of class and convenience, whether it is the swarana mandir, railway station, bus stop, the market or entertainment centres, all facilities and services quickly accessible. The project offers you the option of stylishly designed 1 & 2 BHK homes. Situated in pleasant surroundings, P J HERITAGE is a prestigious address that will make you proud. Indeed, it is the first project in town with basement & G+5-storey building. Spacious and well-ventilated, each flat here is Equipped with high quality specification. Home in P J HERITAGE are designed for easy, comfortable living, every day and every way. Whether you look at it as a holiday home or an investment option P J HERITAGE is truly an irresistible opportunity. Wide concrete driveways, spacious parking areas, lift with power back-up are some of the several features that add up your experience of a relaxed, comfortable and healthy lifestyle. This land is 60 years old, and owner have been owned by reputed firm know by name of Prithviraj, Jeevraj (Cloth Merchant).

Welcome to P J HERITAGE; come explore, enjoy & experience a whole new way of living.

About Falna

Falna is a town in Pali District in Indian state of Rajasthan, specially known for Gate of Godawad.

Falna is the nearest railhead to famous Ranakpur temples which are 35 km from Falna. In Falna itself the Jain Golden Temple is a visitor attraction. Falna Jain golden temple is a temple built at Falna near the famous Jain temple Ranakpur (Rajasthan). It is the first Jain golden temple that has been built in the country by the Jain community of Falna in Rajasthan. The temple is of gold which was donated by the people of the Jain community in the local region for the adoration of temple dome and interiors, main idol is made of black granite.

Another temple, Nimbeshwar Nath Mahadev Temple, situated on the road to Sanderao, is worth a visit. There are many other places of interest (mostly temples) which includes Kheteshwarji, Ambaji Mandir, Shitla Mata Mandir, Chandrabholeswar Mahadev Mandir, Shani Maharaj Mandir Hanuman Mandir, Nilkanth Mahadev Mandir, Pashupatinath Shiv Mandir, Baba Ramdev Mandir etc.. A part from Ranakpur, few other Jain temples are Astapadh Jain Tirth, Sai Dham at Rani Station, Ghanerao Shri Parswanath Jain Tirth, Varkana, etc.

There are large green grounds and high mountains like Jadri, Khudala, Dhani, Shree Sela, Narlai, Rani, Sadri. Also we have few nearby place like Jawai Bandh for sight seeing. Sumerpur and Sheoganj which are also nearby to Jawai Bandh a next station to Falna are a market place for wholesalers and retailers. The Jain community in Falna is one of the main religions of the town. Many people of Jain community have migrated to Mumbai and other places.

Need of the Project

The Core Idea which derived this project was the "cultural bifurcation".

Since the people of this region have migrated to far south and other part of country, the efforts behind introducing this project is to bring them back together with the help of built form .it's the reflection of local community, Values and Aesthetics. Though the people coming & staying here can enjoy the forgotten pride & taste of it's culture. The Planning of P J Heritage gives the revival of ancient cluster community planning which enhances the interaction between the residents, with ample of light & ventilation which is probably not considered in modern topology of houses and apartments.



P.J. Heritage, Falna



Golden Temple, Falna



Jain Temple, Ranakpur



Developer's Visualization

ARIHANT VASTU NIRMAN PVT. LTD

Arihant Vastu Nirman Pvt. Ltd., a trusted Company that is known to build lifelong Relationships with customer through its Focus on Quality, Reliability and Transparency. It's a team of renowned people backed by 25 years of experience in the civil contracting business. With a focus on transparency, customer commitment and superb quality of construction, Arihant Vastu Nirman Pvt. Ltd. Endeavours not just to raise structure but to create everlasting landmark. And along the way, we look to build enduring relationship with our valued customers.

The Reason and vision behind developing P.J HERITAGE is the cultural migration from region, the idea behind the development is to bring back the bifurcated community and culture together as ancient times to create an everlasting land mark with a unique Imagination.

Arihant Constructions believes in developing and constructing aesthetically designed, functionally efficient residential and commercial spaces of international quality, offering "more value for money". We believe our buildings should reflect engineering excellence with a view to provide complete customer satisfaction. It is our intention that the quality of our products and services should result in complete value for our clients. While rendering our construction services, we emphasize on Environmental, Health and Safety (EHS) standards as an integral part of our business practices..

Architects Revelation & Observation

The thought process of architect behind designing P. J. HERITAGE is to bring back the bifurcated cultural impression of its region which is possible through well designed built environment. The flats designed in such a manner which replicates the ancient cultural community, which people of this region used to have in a modern way; it's a renaissance of the lost cultural values through P. J. HERITAGE.

Though it's located in heart of the city with the best location one could ever have, architect's efforts have been to utilise and maximize the possibilities in all aspects till end user.



ARIHANT
CONSTRUCTIONS

CURRENT RUNNING PROJECTS :



Arihant Space Center , Ratnagiri



Neelmani Arcade, Ratnagiri



City Pride , Ratnagiri

TYPICAL FLOOR PLAN (RESIDENTIAL)

Part - A



Stupendous Reception Lobby



Typical - Second, Third, Fourth & Fifth Floor Plan



Typical - First, Second, Third, Fourth & Fifth Floor Plan

Welcome to luxury that's delightfully affordable, the Ultra Modern and Elegant, twin tower project (Part-A & Part-B) promises a truly world class living experience, with elegant entrance foyer are meant to welcome and direct tenants and visitors, control access, and provide exit ways from buildings. It will epitomize luxury with exquisite designs and grandeur looks. These apartments are clubbed with all the world class facilities and lifestyle amenities. The traditional touch add a unique feel with its cutting edge architecture, modern amenities and historical charm.

PJ Heritage is considered Simply the finest of Falna Region's Upscale Residences.

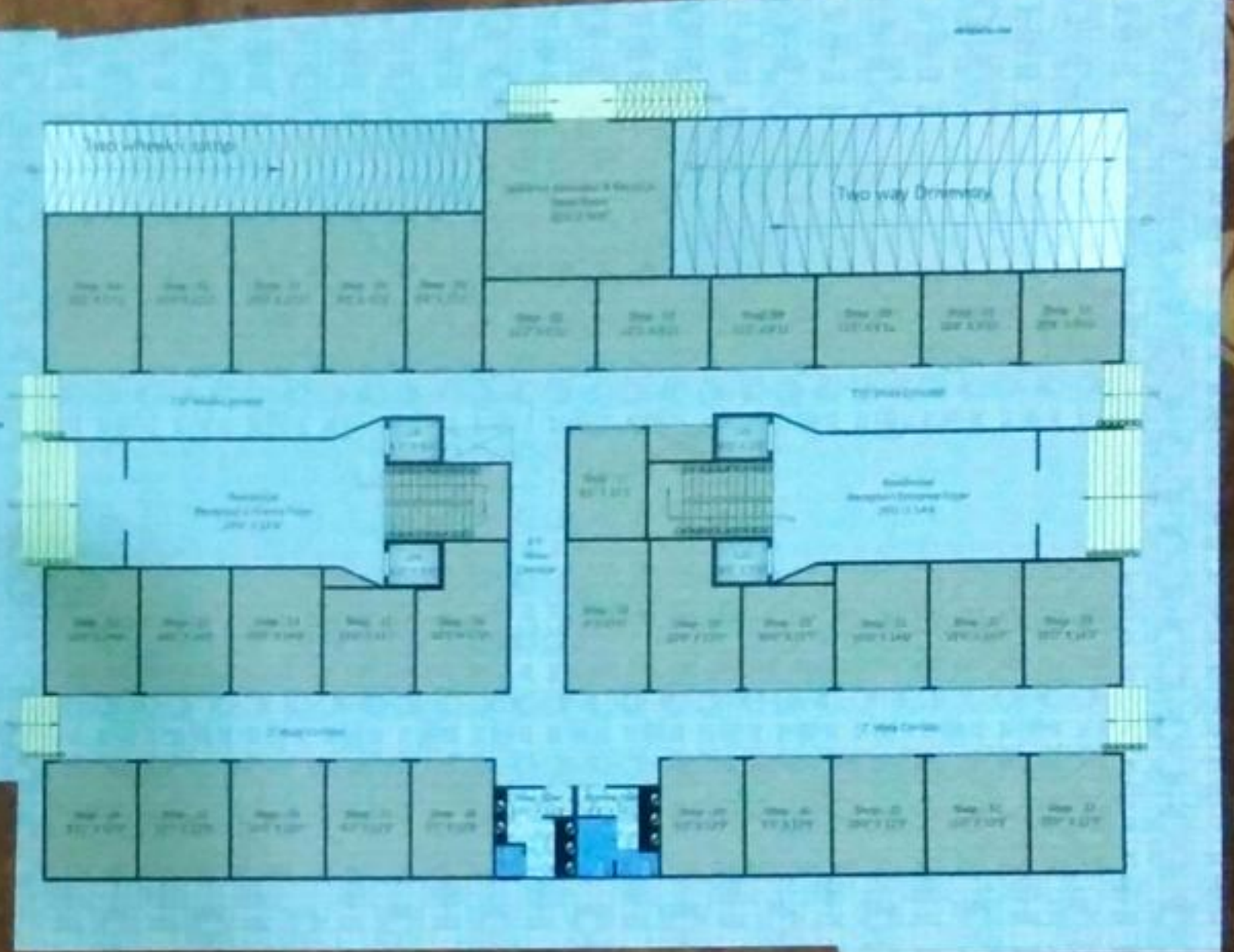


GROUND FLOOR PLAN (COMMERCIAL)

PART - A



PART - B



COMMERCIAL FLOOR PLANS (PART - A)



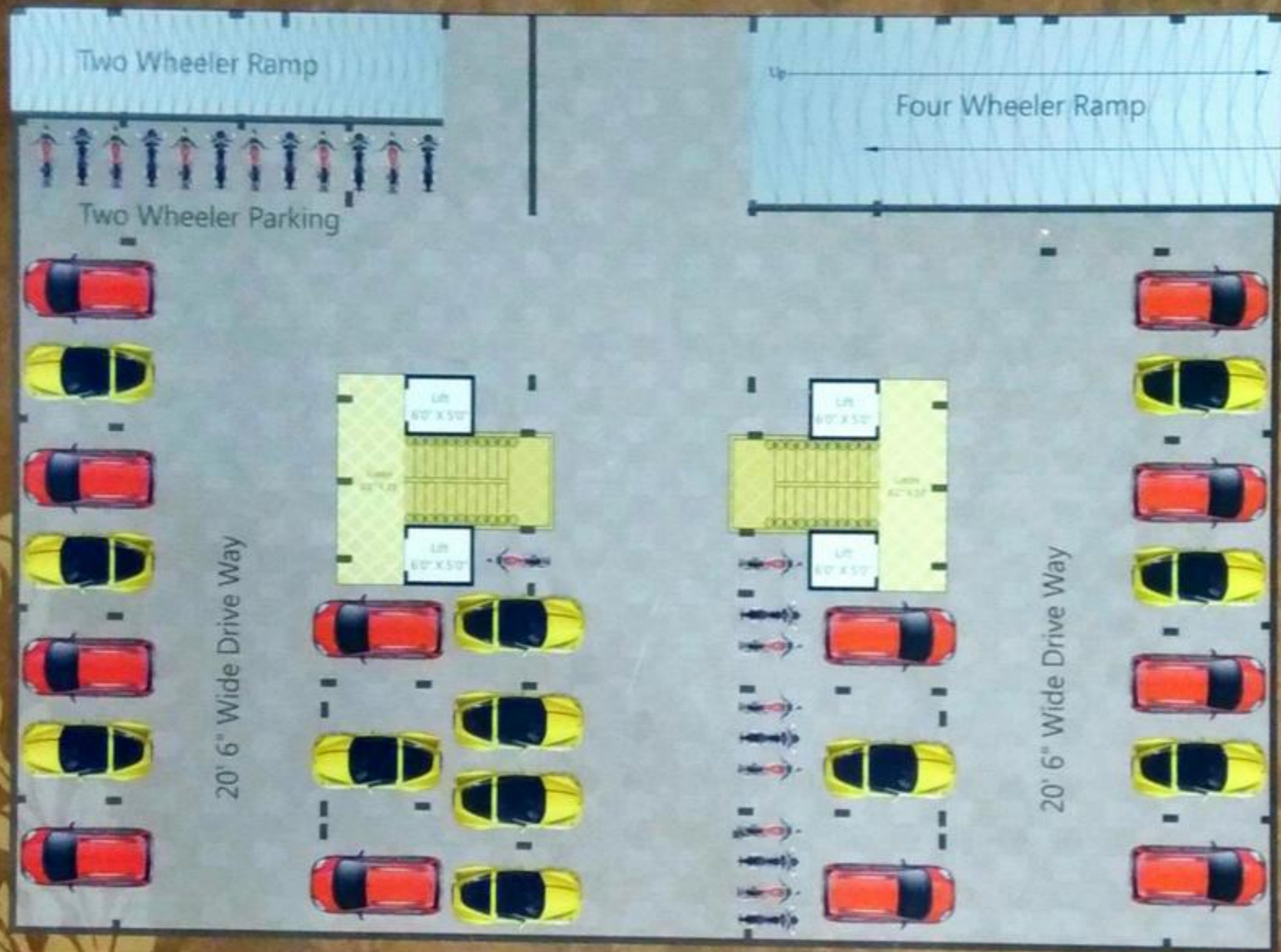
Basement Floor Plan



First Floor Plan



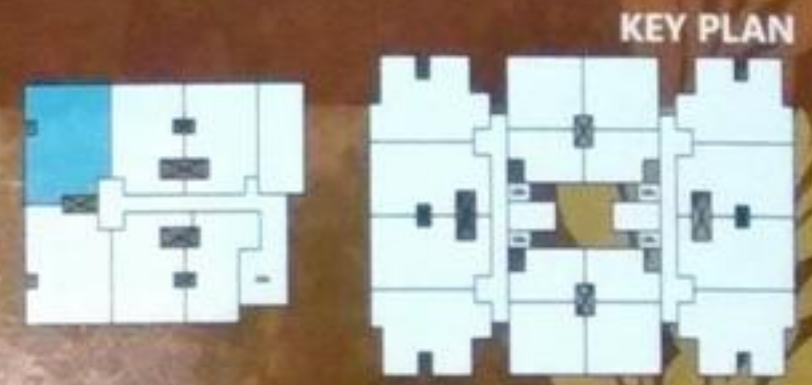
BASEMENT FLOOR PLAN (PART - B)



2
BHK
FLAT



PART A - FLAT No. 101

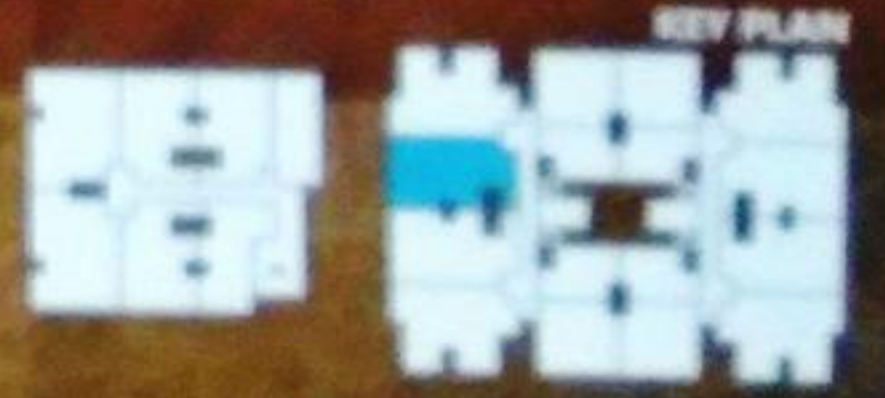




2
BHK
FLAT



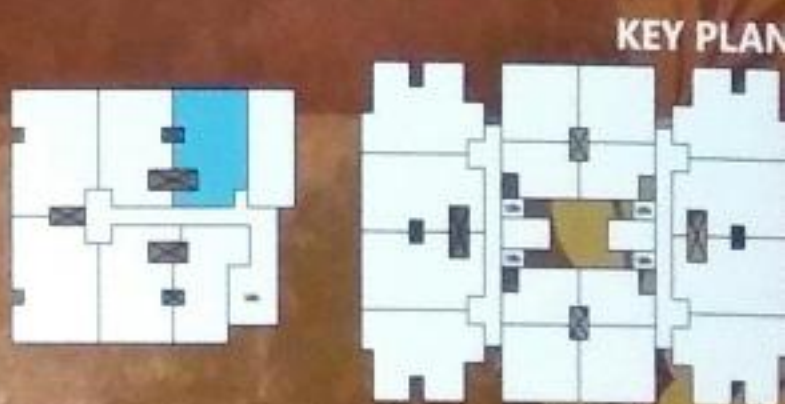
PART B - FLAT No. 102



2
BHK
FLAT



PART A - FLAT No. 103





2
BHK
FLAT



PART B - FLAT No. 116

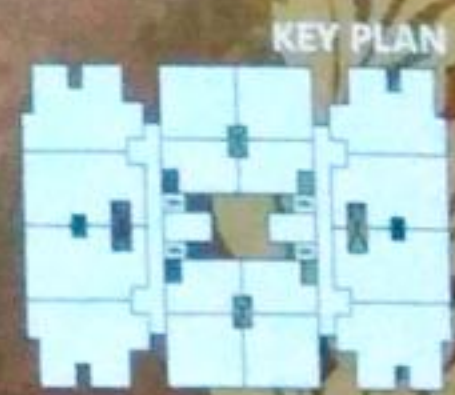
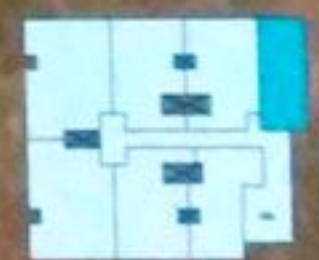




1
BHK
FLAT



PART A - FLAT No. 104



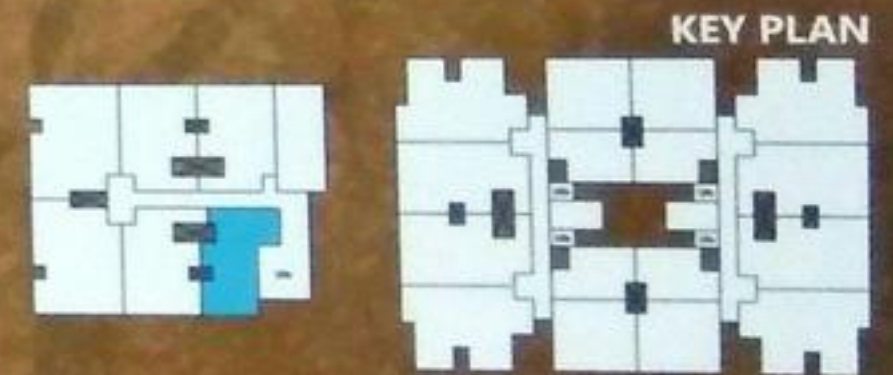
KEY PLAN



1
BHK
FLAT



PART A - FLAT No. 107

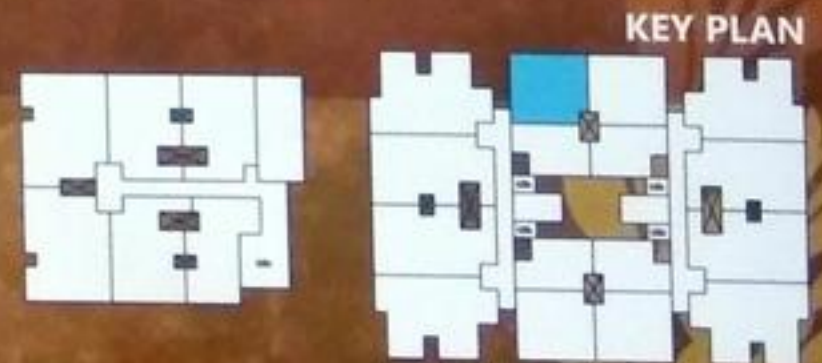




1
BHK
FLAT



PART B - FLAT No. 105



SPECIFICATIONS

STRUCTURE

- Earthquake resistant R.C.C Structure
- Sand Faced External Plaster
- Putty plaster for all Interior walls & passage walls.

DOORS

- Decorative main door with wooden frame & formica finishing and internal flush door
- Marble Frames for toilet & Bathroom

WINDOWS

- 2 and 3 track aluminium powder coated windows with grill
- Louvers windows in W.C & Bathroom
- Granite window sills

FLOORING

- 2' x 2' Vitrified tile (Ivory Plain)
- 2' x 1' for bathroom flooring & walls



KITCHEN

- Granite Kitchen Slab top
- Stainless Steel Sink
- Designer tiles

ELECTRIFICATION

- Copper Wiring
- Provision for A/C Points in M.Bedroom
- TV & Telephone Point in Living room
- Modular Switches
- Circuit Breaker
- Tube light & Fan in Living room & Bedroom (ISI Marks)

PAINTING

- 100 % Acrylic distemper for Internal wall & External wall water proof paint
- Anti termite treatment

TOILETS

- Plumbing work C-PVC & Fitting
- Good quality Wash Basin
- Good quality Sanitary Fittings with Western Commode
- Designer Glazed full tiles

OTHERS

- 5 Passenger lift with Power Back up
- Power back up for lift and passage
- Latch lock for main door
- Balcony with grill & with oil paint colour.
- Staircase Handrailing grill with paint.
- Staircase Tappa with Green marble moulded
- Decorative Entrance Lobby



Location Map



Railway Station - 0.5 km
 Hospital - 1 km
 Swarana Mandir - 0.25 km
 Bus Stand - 0.5 km
 Ranakpur - 30 km

DEVELOPERS:



**ARIHANT
CONSTRUCTIONS**

CORPORATE OFFICE :

ARIHANT VASTU NIRMAN PVT. LTD.
 Siddhivinayak Community Center, 1st Floor, Siddhivinayak Nagar
 Shivaji Nagar, Ratnagiri - 415612
 Website : www.arihantconstructions.com, Email :
manoj@arihantconstructions.com
 Phone : (02352) 223552, 223052, Fax : (02352) 223952, 223352

BOOKING OFFICE :

ARIHANT VASTU NIRMAN PVT. LTD.
 C/O- Prithviraj Jeevraj, College road, Falna
 Dist. Pali-306116 (Raj.)

CONTACT :

+91-97729 71999
 +91-97729 72999
 +91-97729 73999

CREDITS

ARCHITECTS:

JBC ARCHITECT & ASSOCIATES
 79, Mahaveer Marg Near Town Hall, Opp. Saroj Petrol Pump, Suraj Pole,
 PALI - MARWAR 306401 (Raj.)
 +91-94140 51105, +91-95710 01079

KARTAVYA ARCHITECTS

Bhaleshwar Bhawan (First Floor), Opp Shani Mandir, Pur road,
 AzadNagar, Bhillwara - 311001 (Raj)

STRUCTURE CONSULTANT:

ANR IP Pvt Ltd.
 Sonkhiya Bhawan Vishweshwaraiya Nagar
 Jaipur - 302001 (Raj.)

MEP CONSULTANT:

Vipul Consulting
 F9/440 Keshav Nagar Chitrakut Scheme
 Jaipur - 302001 (Raj.)

LEGAL ADVISOR:

Rajesh Singhvi
 104, Rizvi Chambers-2, Jain Madir Marg, Near Vodafone, Hill Road,
 Bandra (W),
 Mumbai-400050

TAX CONSULTANT:

Krishna R. Moondra & Associates
 JBF House, 1st Floor, Old Post Office Lane, Kalbadevi Road,
 Mumbai - 400002

GRAPHICAL ILLUSTRATION:

3D VISION
 304, Kamal Complex, Gulab Bagh Road, Udaipur (Raj.)



This Brochure is illustration purpose only and it cannot be treated as a legal document. Developer reserve the right to amend layout, Plan, No. of Flats, Elevation, Color Scheme, Specification and other amenities without any prior notice & information.